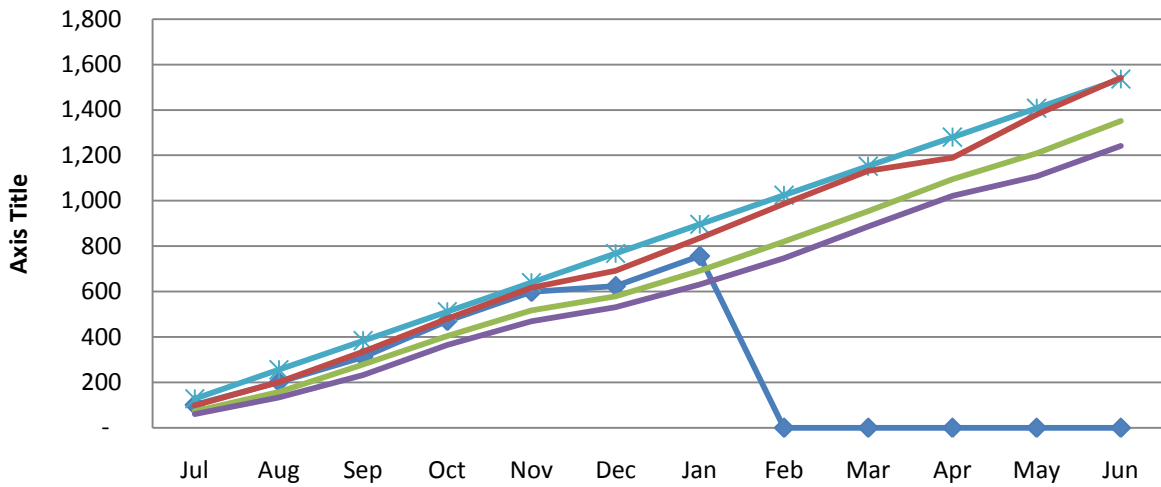
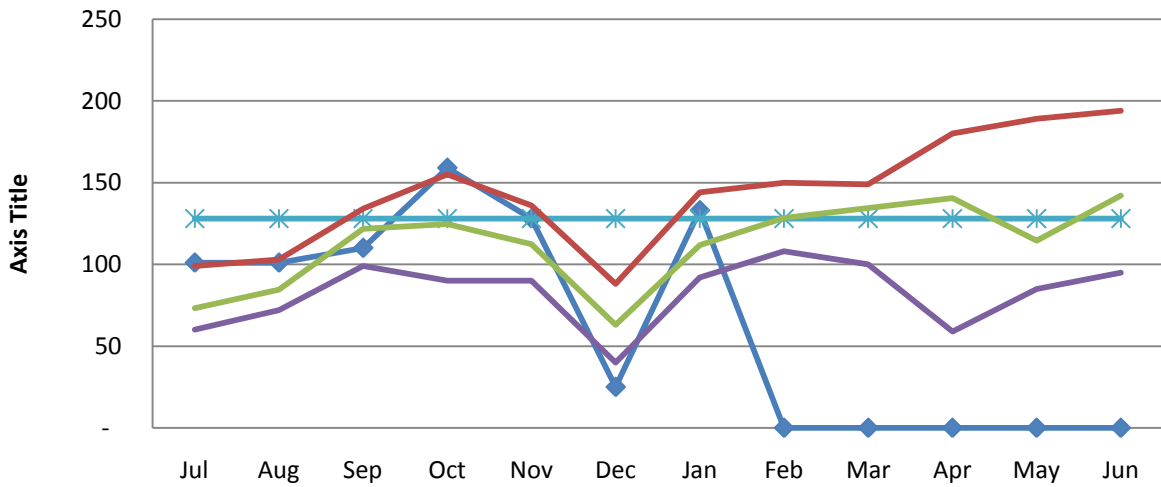


Cumulative New Members



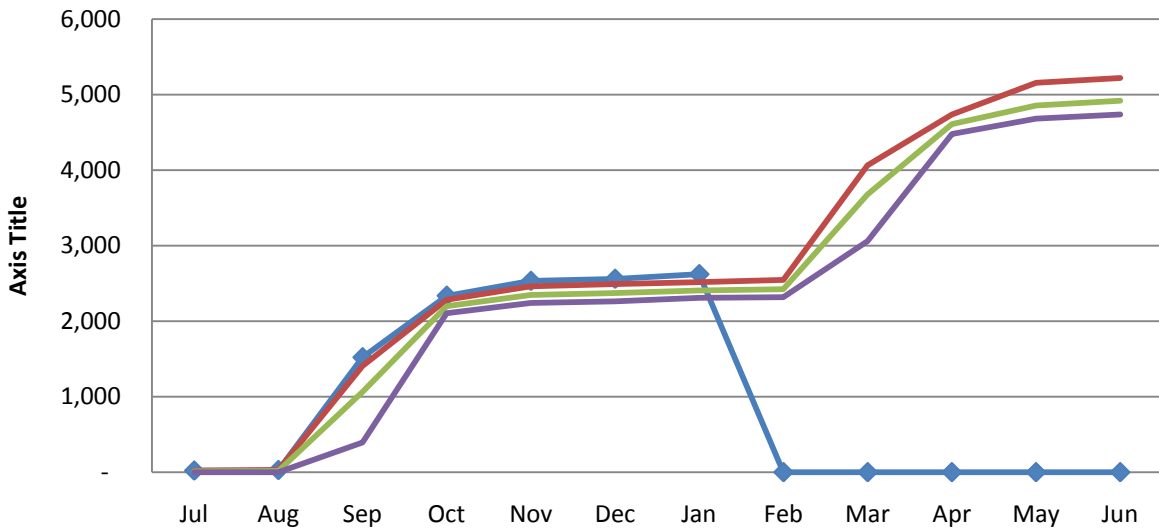
	Jul	Aug	Sep	Oct	Nov	Dec	Jan	Feb	Mar	Apr	May	Jun
◆ Current	101	202	312	471	599	624	757	-	-	-	-	-
* Goal	128	256	384	512	640	768	896	1,024	1,152	1,280	1,408	1,536
— High	99	202	336	481	617	692	836	986	1,131	1,190	1,379	1,542
— Ave	73	158	280	404	517	580	691	820	954	1,095	1,209	1,351
— Low	60	134	233	365	469	531	632	747	887	1,022	1,107	1,242

Monthly New Members



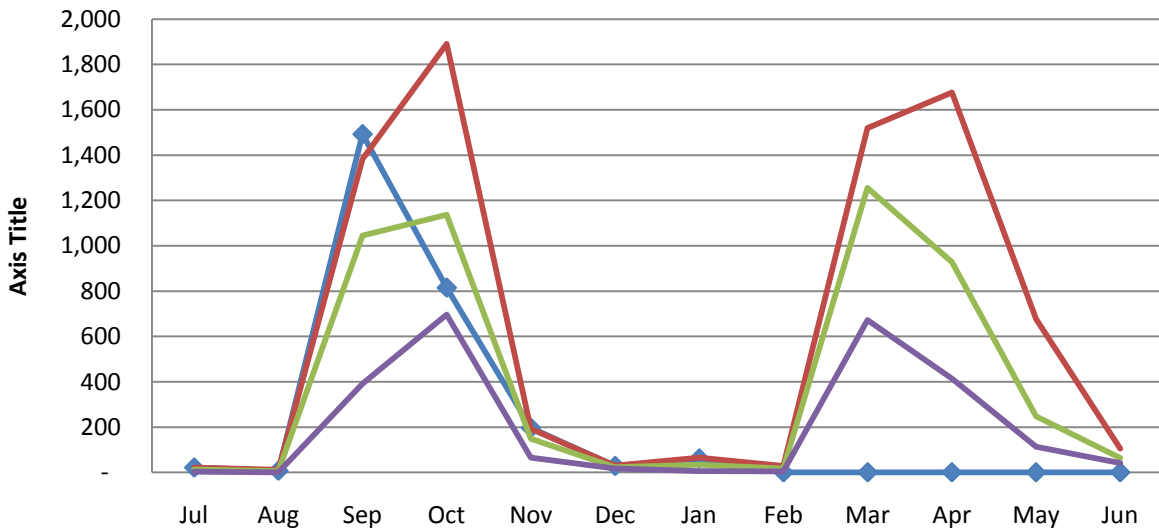
	Jul	Aug	Sep	Oct	Nov	Dec	Jan	Feb	Mar	Apr	May	Jun
◆ Current	101	101	110	159	128	25	133	-	-	-	-	-
* Goal	128	128	128	128	128	128	128	128	128	128	128	128
— High	99	103	134	155	136	88	144	150	149	180	189	194
— Ave	73	85	122	125	112	63	112	128	134	141	115	142
— Low	60	72	99	90	90	40	92	108	100	59	85	95

Cumulative Renewal Members



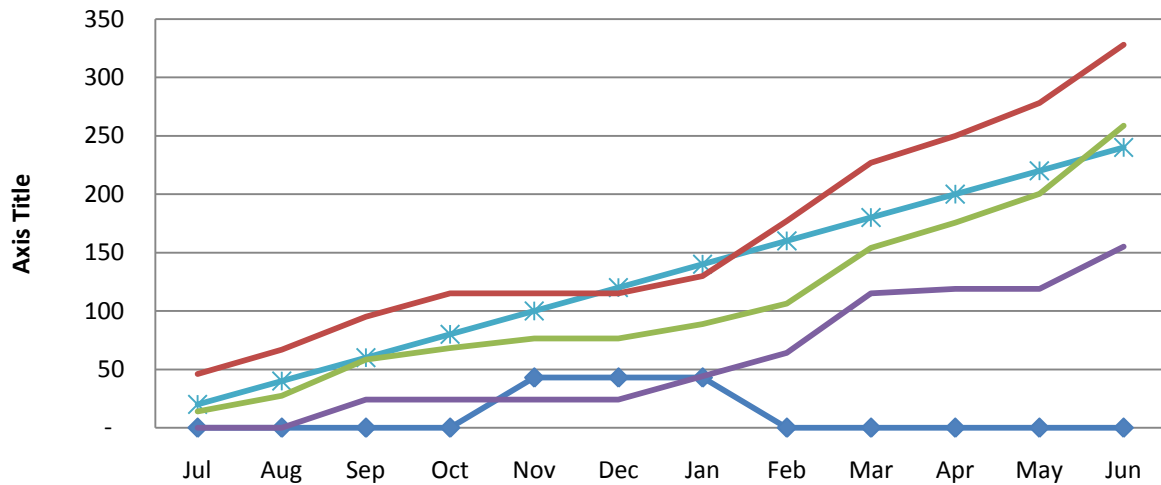
	Jul	Aug	Sep	Oct	Nov	Dec	Jan	Feb	Mar	Apr	May	Jun
Current	21	28	1,521	2,336	2,532	2,560	2,621	-	-	-	-	-
High	22	31	1,409	2,286	2,463	2,493	2,516	2,545	4,064	4,737	5,154	5,219
Ave	13	19	1,064	2,200	2,348	2,372	2,406	2,424	3,679	4,608	4,855	4,919
Low	3	3	395	2,106	2,243	2,262	2,309	2,319	3,061	4,478	4,682	4,738

Monthly Renewal Members



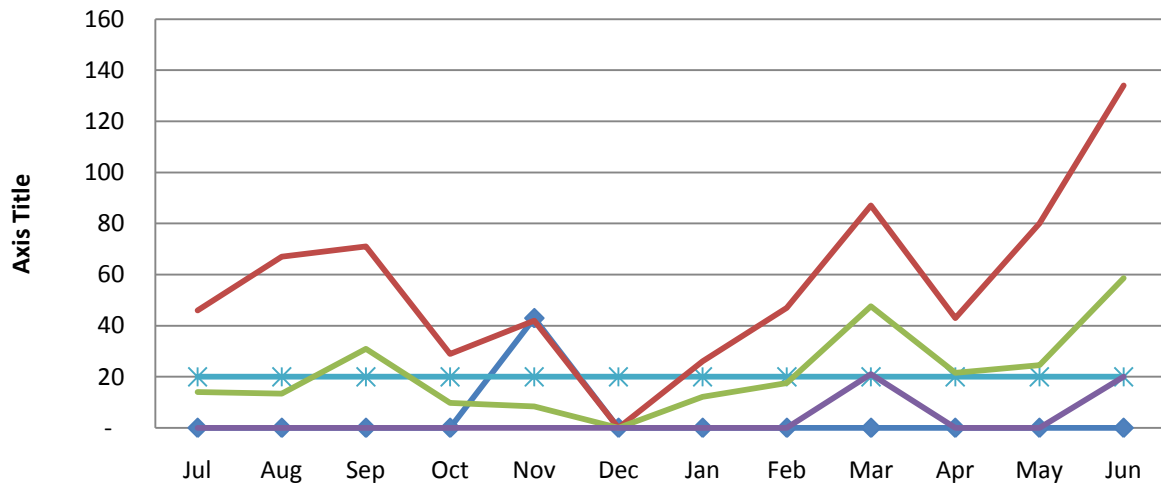
	Jul	Aug	Sep	Oct	Nov	Dec	Jan	Feb	Mar	Apr	May	Jun
Current	21	7	1,493	815	196	28	61	-	-	-	-	-
High	22	12	1,383	1,891	192	30	66	29	1,519	1,676	676	105
Ave	13	5	1,045	1,136	148	23	34	18	1,255	929	247	64
Low	3	-	392	697	66	18	6	5	672	414	114	42

Cumulative Charter Members

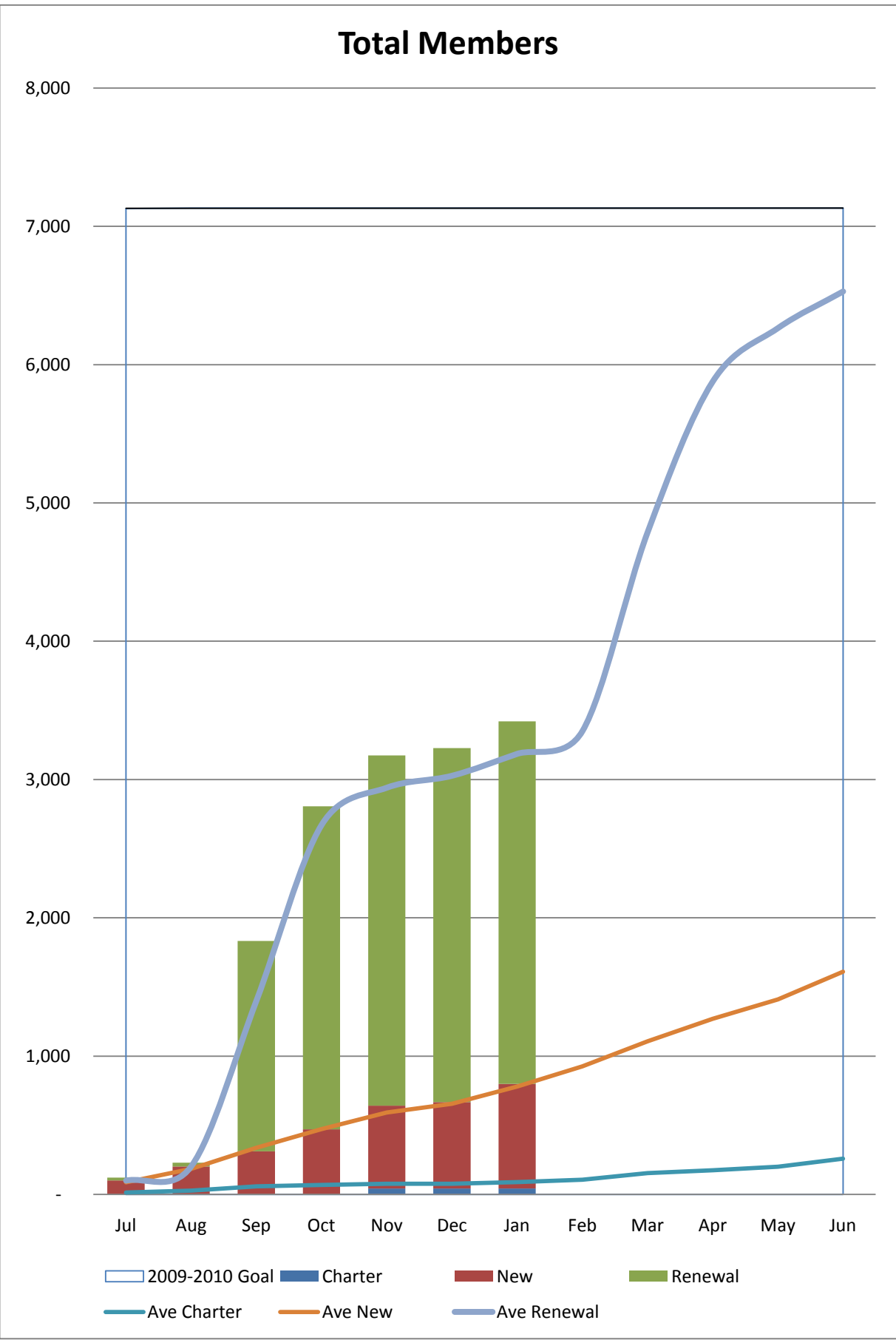


	Jul	Aug	Sep	Oct	Nov	Dec	Jan	Feb	Mar	Apr	May	Jun
◆ Current	-	-	-	-	43	43	43	-	-	-	-	-
* Goal	20	40	60	80	100	120	140	160	180	200	220	240
— High	46	67	95	115	115	115	130	177	227	250	278	328
— Ave	14	27	58	68	77	77	89	106	154	176	200	259
— Low	-	-	24	24	24	24	44	64	115	119	119	155

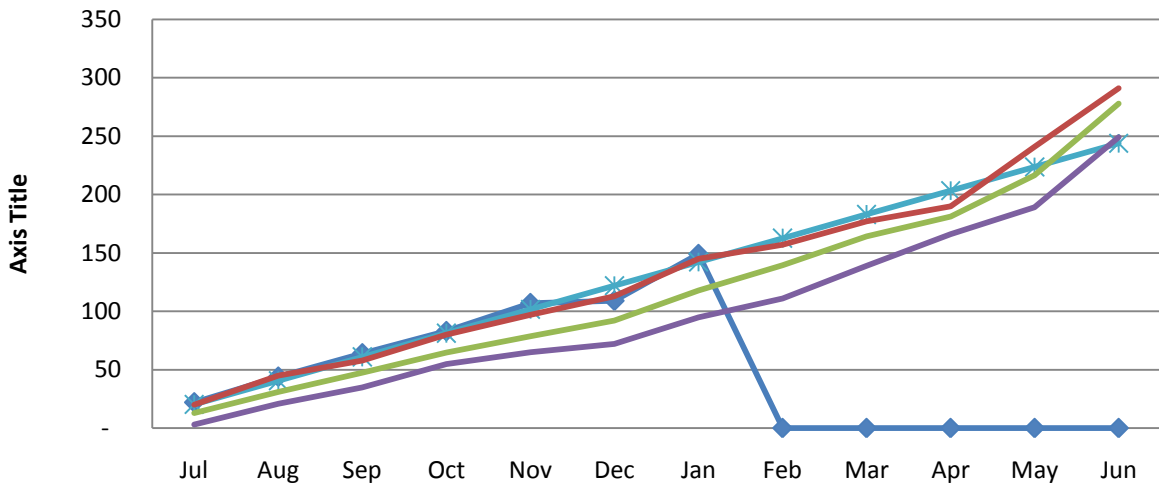
Monthly Charter Members



	Jul	Aug	Sep	Oct	Nov	Dec	Jan	Feb	Mar	Apr	May	Jun
◆ Current	-	-	-	-	43	-	-	-	-	-	-	-
* Goal	20	20	20	20	20	20	20	20	20	20	20	20
— High	46	67	71	29	42	-	26	47	87	43	80	134
— Ave	14	13	31	10	8	-	12	18	48	22	25	59
— Low	-	-	-	-	-	-	-	-	21	-	-	20

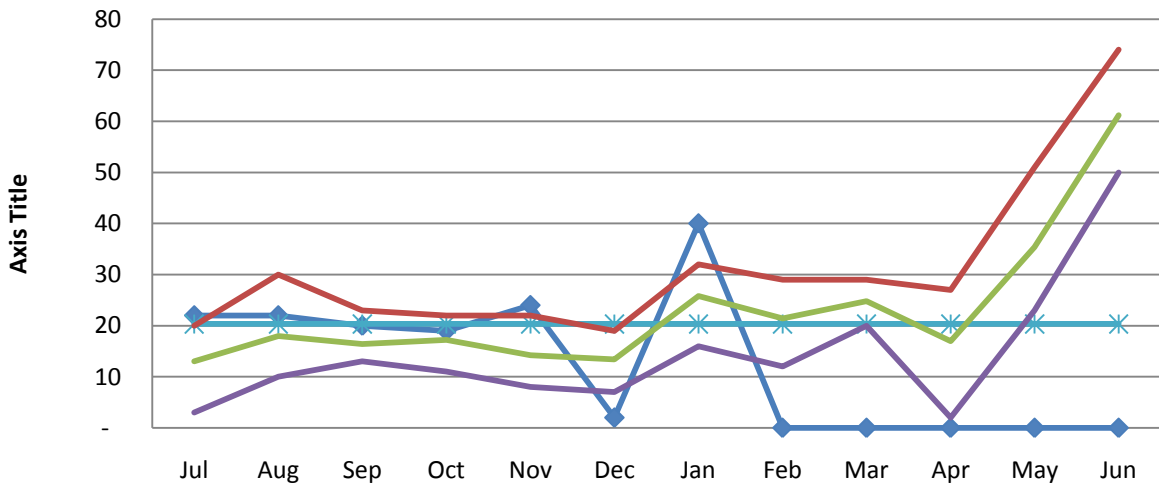


Cumculative CCs



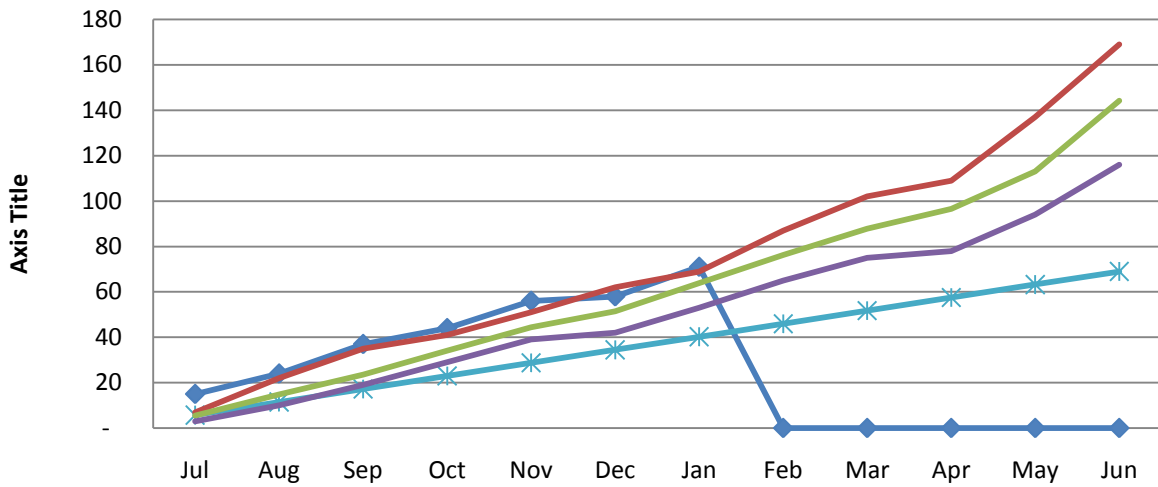
	Jul	Aug	Sep	Oct	Nov	Dec	Jan	Feb	Mar	Apr	May	Jun
◆ Current	22	44	64	83	107	109	149	-	-	-	-	-
* Goal	20	41	61	81	102	122	142	163	183	203	224	244
— High	20	45	58	80	97	113	145	157	177	190	241	291
— Ave	13	31	47	65	79	92	118	139	164	181	217	278
— Low	3	21	35	55	65	72	95	111	139	166	189	249

Monthly CCs



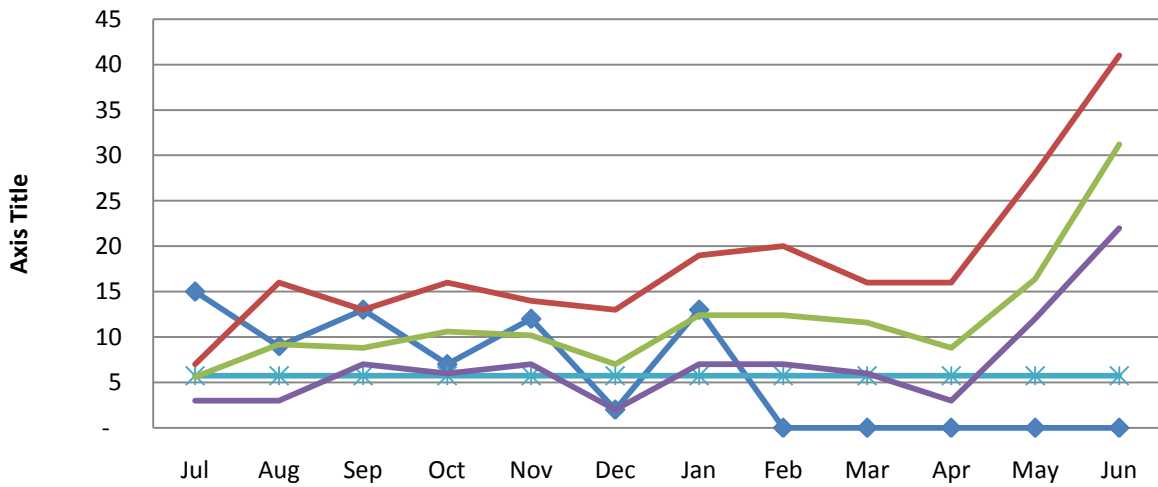
	Jul	Aug	Sep	Oct	Nov	Dec	Jan	Feb	Mar	Apr	May	Jun
◆ Current	22	22	20	19	24	2	40	-	-	-	-	-
* Goal	20	20	20	20	20	20	20	20	20	20	20	20
— High	20	30	23	22	22	19	32	29	29	27	51	74
— Ave	13	18	16	17	14	13	26	21	25	17	35	61
— Low	3	10	13	11	8	7	16	12	20	2	23	50

Cumulative ACs



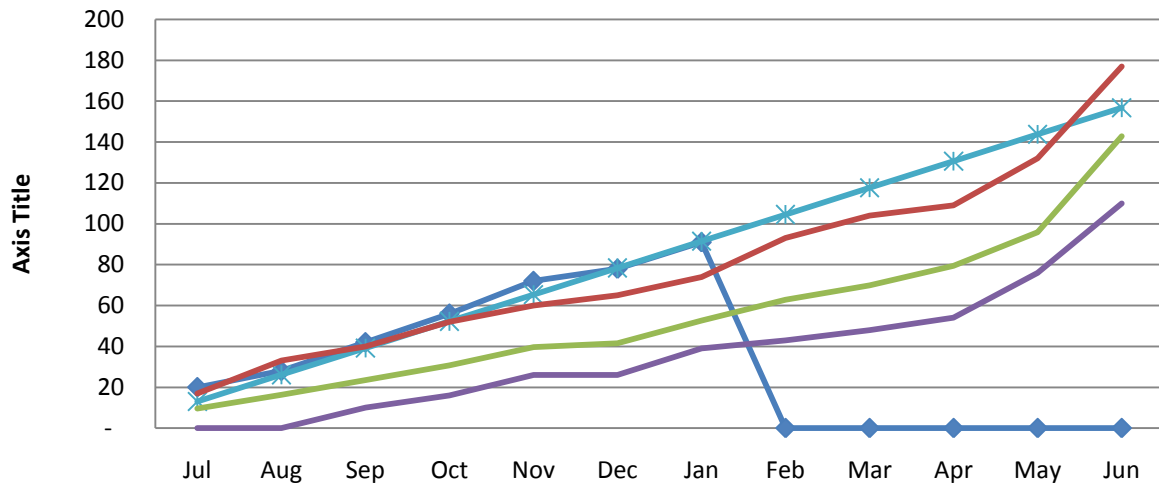
	Jul	Aug	Sep	Oct	Nov	Dec	Jan	Feb	Mar	Apr	May	Jun
◆ Current	15	24	37	44	56	58	71	-	-	-	-	-
* Goal	6	12	17	23	29	35	40	46	52	58	63	69
— High	7	22	35	41	51	62	69	87	102	109	137	169
— Ave	6	15	24	34	44	51	64	76	88	97	113	144
— Low	3	10	19	29	39	42	53	65	75	78	94	116

Monthly ACs



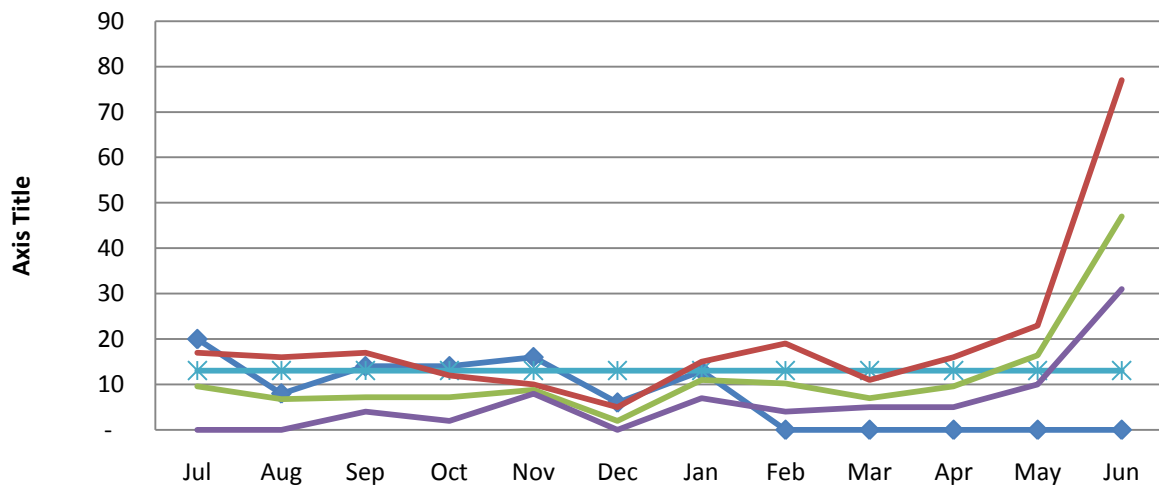
	Jul	Aug	Sep	Oct	Nov	Dec	Jan	Feb	Mar	Apr	May	Jun
◆ Current	15	9	13	7	12	2	13	-	-	-	-	-
* Goal	6	6	6	6	6	6	6	6	6	6	6	6
— High	7	16	13	16	14	13	19	20	16	16	28	41
— Ave	6	9	9	11	10	7	12	12	12	9	16	31
— Low	3	3	7	6	7	2	7	7	6	3	12	22

Cumulative Leadership Awards



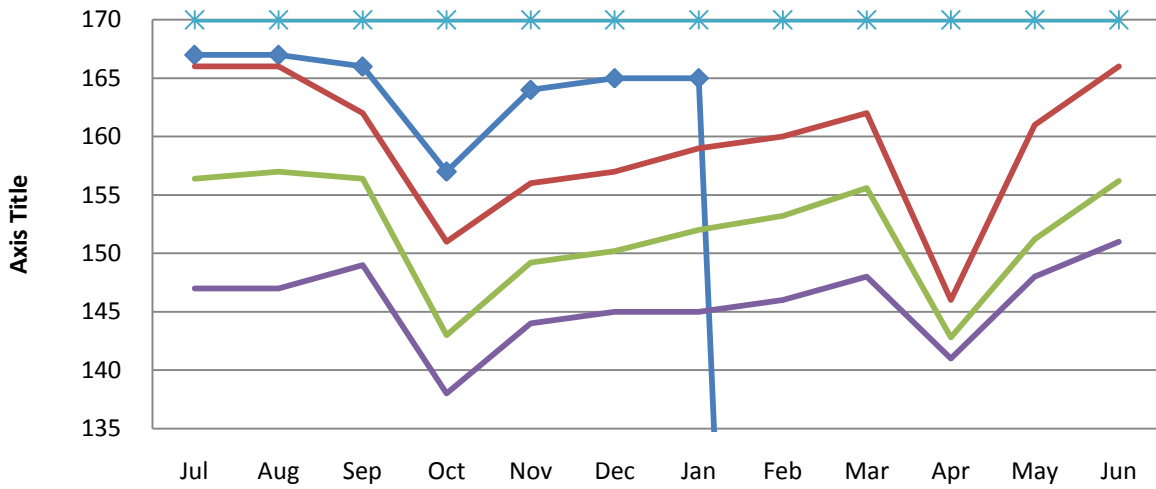
	Jul	Aug	Sep	Oct	Nov	Dec	Jan	Feb	Mar	Apr	May	Jun
◆ Current	20	28	42	56	72	78	91	-	-	-	-	-
* Goal	13	26	39	52	65	78	91	105	118	131	144	157
— High	17	33	40	52	60	65	74	93	104	109	132	177
— Ave	10	16	24	31	40	42	53	63	70	79	96	143
— Low	-	-	10	16	26	26	39	43	48	54	76	110

Monthly Leadership Awards



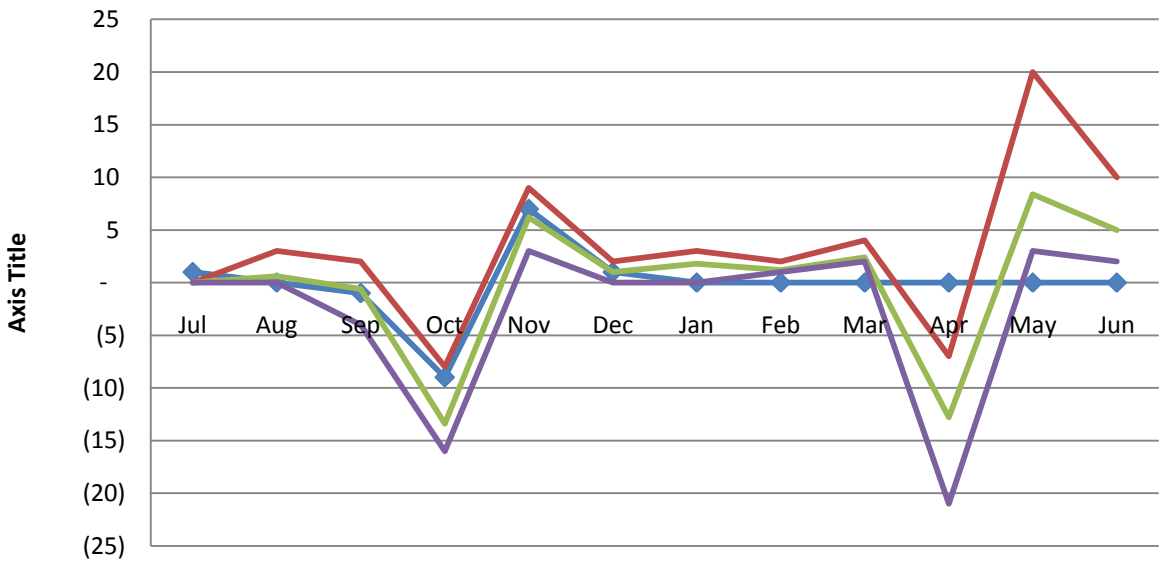
	Jul	Aug	Sep	Oct	Nov	Dec	Jan	Feb	Mar	Apr	May	Jun
◆ Current	20	8	14	14	16	6	13	-	-	-	-	-
* Goal	13	13	13	13	13	13	13	13	13	13	13	13
— High	17	16	17	12	10	5	15	19	11	16	23	77
— Ave	10	7	7	7	9	2	11	10	7	10	16	47
— Low	-	-	4	2	8	-	7	4	5	5	10	31

Paid Clubs



	Jul	Aug	Sep	Oct	Nov	Dec	Jan	Feb	Mar	Apr	May	Jun
◆ Current	167	167	166	157	164	165	165	-	-	-	-	-
* Goal	170	170	170	170	170	170	170	170	170	170	170	170
— High	166	166	162	151	156	157	159	160	162	146	161	166
— Ave	156	157	156	143	149	150	152	153	156	143	151	156
— Low	147	147	149	138	144	145	145	146	148	141	148	151

Change in Paid Clubs



	Jul	Aug	Sep	Oct	Nov	Dec	Jan	Feb	Mar	Apr	May	Jun
◆ Current	1	-	(1)	(9)	7	1	-	-	-	-	-	-
— High	-	3	2	(8)	9	2	3	2	4	(7)	20	10
— Ave	-	1	(1)	(13)	6	1	2	1	2	(13)	8	5
— Low	-	-	(4)	(16)	3	-	-	1	2	(21)	3	2

District Graphic Stats

Here are the District Graphic Stats for this year. I complete them for the month end each month. There are more data points available but they only serve to smooth the curves. I find monthly reporting is consistent and more frequent data is a lot for work for this manual process and tends to overemphasize performance stats over club, district and leadership quality.

Chart Descriptions

I have used 5 years of history for comparison to the current year. In each case you have the Highest, Average and Lowest each month for 5 years not including the current year. This keeps the comparison fair throughout the year. Total Members, Paid Clubs, CCs and ACs goal are the Distinguished District Program goals. Leadership Goals are based on the maximum 10 points on the Distinguished District Program. All of them are level or the same for 12 months.

Unlike the Toastmasters International statistics that are only presented as cumulative or running totals, I've separated them by monthly activity. It will give the leaders a better idea of how each month looks. Not surprisingly there are differences in each month in the Toastmasters year.

Cumulative Members is broken into **New, Charter and Renewal Members** since the Total Member count cannot be managed or lead. Only the components can be influenced individually. Total Member payments is presented on Page 8 as a stacked bar graph of the components for the current year, stacked lines for Average New, Charter and Renewal Members and a clear area for the current Total Member payment goal for Distinguished District. In most cases, the Stacked Average does not meet the current goal because Districts are growing every year. However comparing the Average cumulative to the current year helps the officers see graphically how their year is similar to what has gone on before.

Since specific goals for New and Charter Members are not provided, I created one using the 24 Monthly High and Average numbers. That average is used monthly to provide a guideline. No goal line is represented on the Renewal Members.

If you have any questions or suggestions, please feel free to contact me.

Best Regards,
J Randy Penn, DTM PDG
Make Your Mark!

pennjr@comcast.net

<http://www.facebook.com/j.randy.penn>

<http://www.linkedin.com/in/jrandypenn>